



## OPTIONS

### Methods of installation

- attached by bolts to foundation

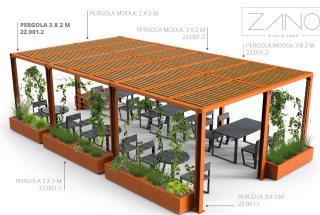
### Pergola roof

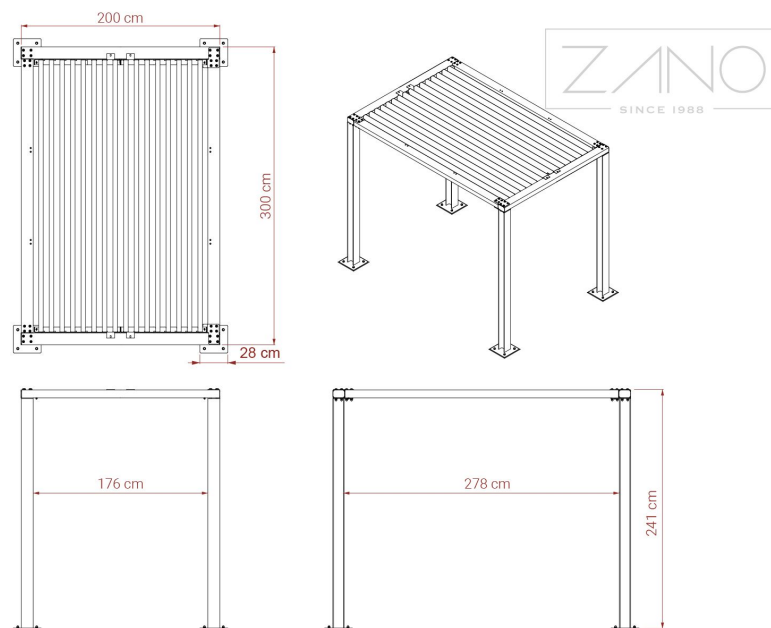
- softwood
- hardwood of European origin
- Hardwood (oil finish)
- premium hardwood

## DESCRIPTION

The pergola is a decorative garden structure consisting of a sturdy steel frame and horizontal beams, with the option to add walls with steel cables for climbing plants. It is ideal for creating a shaded outdoor seating area while adding aesthetic appeal to a garden, park or terrace. Our Pergola offers protection from the sun, increasing the functionality of the outdoor space of your home, office or urban and park space.

The structure of the pergola is bent, welded and bolted from 120 x 114 mm l-beams and 120 x 80 mm rectangular profiles from s235Jr carbon steel galvanised and powder coated according to RAL palette. Roofing of the pergola using 17 boards measuring 45 x 70 x 2740 mm. European coniferous wood impregnated and varnished twice or exotic wood impregnated and oiled twice. It is possible to additionally finish the side walls of the pergola with boards or steel cables.





## GENERAL TECHNICAL DATA

### Materials

- Carbon steel, galvanised, painted in RAL colour
- wood: European coniferous or exotic wood

### Dimensions

- width: 300 cm
- height: 241 cm
- depth: 200 cm

ZANO



*Iwona Żaczek*

Product: Pergola 3 x 2 m  
 Catalog number: **22.001.2**  
 Designer: Iwona Żaczek

In accordance with the Polish Law on Copyright and Related Rights of 04.02.1994 (Official Journal of Laws No. 24, item 83, corrected: Journal of Laws No. 43, item 170) and in accordance with the EU copyright legislation including all EU directives and regulations on copyright, Zano Mirosław Zarotynski Company, reserves the copyright of drawings, descriptions, 3D models, renderings, graphics, content contained in offers, attachments to offers and all other documents. Its content is the intellectual property of ZANO Mirosław Zarotynski company. The use of author's ideas, solutions, copying, distribution of photos, graphics or fragments of graphics, descriptive texts, for profit, without the permission of the author - ZANO Mirosław Zarotynski company - is prohibited and constitutes a copyright infringement and is punishable.

td>

**NOTE: The drawings do not reflect the actual dimensions of the foundation. They are only exemplary assembly schemes taking into account the type of anchoring and the substrate material to which the furniture is to be fixed.**

The size of the foundation depends on the local foundation conditions.



### INSTALLATION INTO PAVING WITH FOUNDATION

#### Description of the assembly

1. ZANO product
2. Quick-action fastener or chemical anchor
3. Stone paving / concrete paving / stone slabs / concrete slabs
4. Sand ballast (approx. 2 - 4 cm)
5. Stone aggregate substructure
6. Concrete foundation, class C16/20 (top surface concrete 10 cm below paving surface)
7. Ground



### INSTALLATION TO PAVING

#### Description of the assembly

1. ZANO product
2. Quick-action fastener or chemical anchor
3. Stone paving / concrete paving / stone slabs / concrete slabs
4. Sand ballast (approx. 2 - 4 cm)
5. Stone aggregate substructure
6. Ground



### CONCRETE / ASPHALT MOUNTING

#### Description of the assembly

1. ZANO product
2. Quick-action fastener or chemical anchor
3. Fixed hardened surface e.g. concrete or asphalt
4. Concrete foundation, class C16/20 (top surface concrete 10 cm below paving surface)
5. Stone aggregate substructure
6. Sand ballast (approx. 2 - 4 cm)
7. Ground



### MOUNTING TO CONCRETE FOUNDATION

#### Description of the assembly

1. ZANO product
2. Quick-action fastener or chemical anchor
3. Concrete foundation, class C16/20 (top surface concrete 10 cm below paving surface)
4. Ground